



## DESCRIPTION

**CROXON CORLO** panels are the first innovation in the range of floating roofs Croxon. They are made entirely from both the perimeter and internal structure as the absorbent core polyester fiber. Specially designed to create spaces or highlight specific areas of large volumes, adding a decorative and acoustic comfort, located in an area or in a workspace. Surface are micro perforated.

Acoustical panels **CROXON CORLO** are lined by an acoustic high quality fabric.

## SPECIFICATIONS

Material	Polyester fiber.
Fabric acoustic	SCREEN. Catalog: <a href="http://www.croxon.es">www.croxon.es</a>
Reaction to fire	Bs1 d0 (Euroclases).
Recyclability	100% recyclable.
Humidity resistance	100% RH.
Fungus resistance	does not absorb moisture is not putrescible.
Edges detail	Straight.
Formats	Concave, convex and straight.



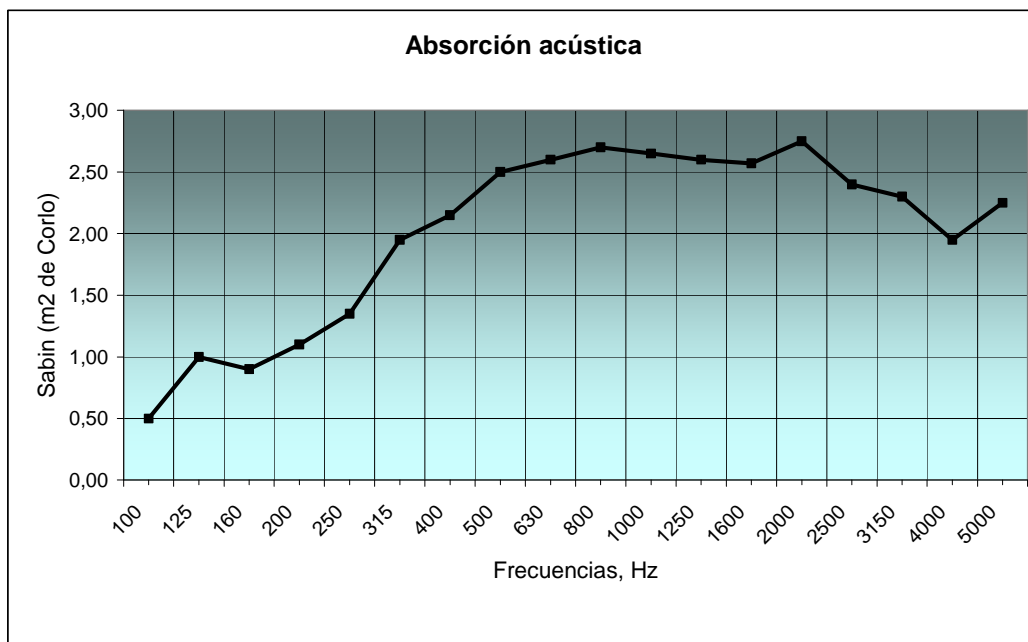
Presentation			
Products	Measures (mm)	Sagittal (mm)	Weight (kg/ud)
Croxon Corlo 6/12	50 x 600 x 1200	170	2,30
Croxon Corlo 6/18	50 x 600 x 1800	200	3,30
Croxon Corlo 6/24	50 x 600 x 2400	290	4,80
Croxon Corlo 6/30	50 x 600 x 3000	350	6,10
Croxon Corlo 1/12	50 x 1000 x 1200	170	3,80
Croxon Corlo 1/18	50 x 1000 x 1800	200	5,70
Croxon Corlo 1/24	50 x 1000 x 2400	290	7,60
Croxon Corlo 1/30	50 x 1000 x 3000	350	9,40



## APPLICATIONS

**CROXON CORLO** panels are designed for application in architectural spaces where important design elements combined with acoustic absorption is required. Like, for example, in areas of high competition and where space is given to a particular highlight:

- Hallway.
- Reception rooms.
- Shops and offices.
- Spaces without conditioning.
- Stations, airports, fairs, etc..



Sound absorption panel Corlo Croxon 1/24 on a similar a conventional acoustic ceiling plane (EN-ISO 354) surface.

## ACOUSTIC PERFORMANCE

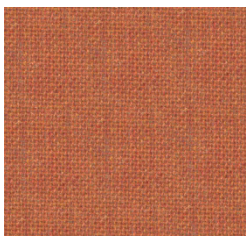
**CROXON CORLO** provides a perfect acoustic behavior in large open spaces in reception areas, noisy spaces, shopping centers, cinemas, etc.

Installing **CROXON CORLO** in a professional environment occupied by a person or persons creates a sense of space acoustically conditioning. This may be an advantage where there are high ceilings.

By providing excellent sound absorption, layout panels allow **CROXON CORLO**:

- Reduce reverberation times.
- Regular noise levels.
- To improve the intelligibility of a conversation.
- Ensure acoustic treatment for the people who work there.
- With a panel of 2,2 m2 **CROXON CORLO** nearly 3 Sabines sound absorption is obtained at 1000 (Hz) (EN ISO 354)
- The panels also act as partial reflectors of sound.

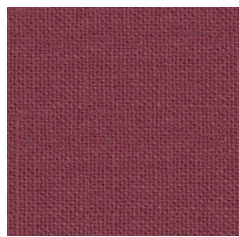
Color fabrics:



IB 142



IB 132



IB 079



IB 015



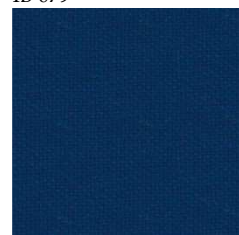
IB 138



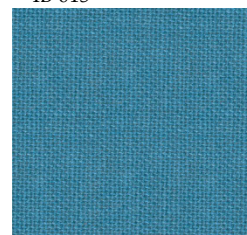
IB 133



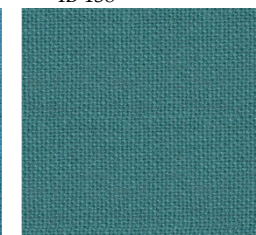
IB 098



IB 007



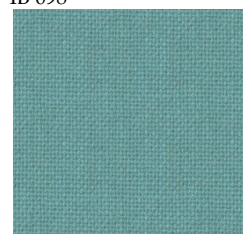
IB 125



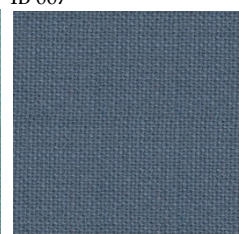
IB 127



IB 041



IB 146



IB 074



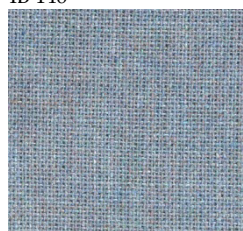
IB 073



IB 081



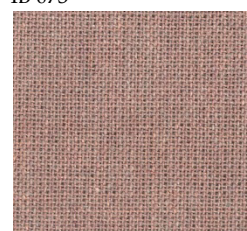
IB 201



IB 119



IB 025



IB 135





## PROPERTIES

CROXON CORLO panels are used to define spaces, accentuate an area, capture attention and create a subtle whole.

Formats combination, durability, wash ability. Standard components allow unique creations. Scratch resistance, stiff edges.

The combinations with luminaires accentuate the look. Allow the combination of concave panels, convex and straight

Quick and easy installation. They are supplied with your kit. They should not be superimposed on top of other panels.





## INSTALLATION

After opening the box **CROXON CORLO** before installation and verify that they are all fasteners.

Two people are needed to be handled with care without risk of each panel deteriorarlo and install it in good condition.

We recommend that you remove the panel from its box only when you have to fix the suspension cables to the latter. Because of the particularity of the product, we recommend that you remove the suspension fittings and lock, first forged cables without removing the panel from its box. Keep protective plastic surrounding the **CROXON CORLO** and protection of the songs to complete the installation.

**CROXON CORLO** should not be cut, drilled or suffer any modification. You should not rely on any material or apparatus panel. The suspension rope must be fixed to the slab, ie, it should never hang a suspended ceiling. Neither should be installed in outdoor areas.

## **CROXON, S. L.**

Polig. Majaravique, 27 B - 41309 La Rinconada (Sevilla). España  
Teléf. 95 490 4225 – Fax: 95 490 6676 [www.croxon.es](http://www.croxon.es) – email: [info@croxon.es](mailto:info@croxon.es)