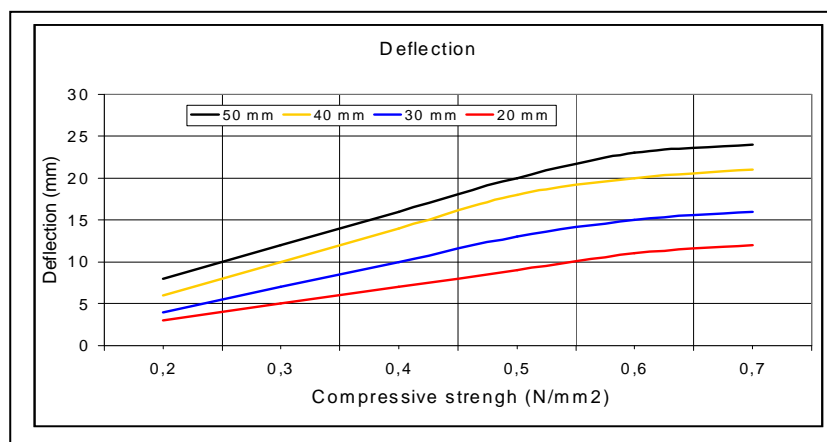
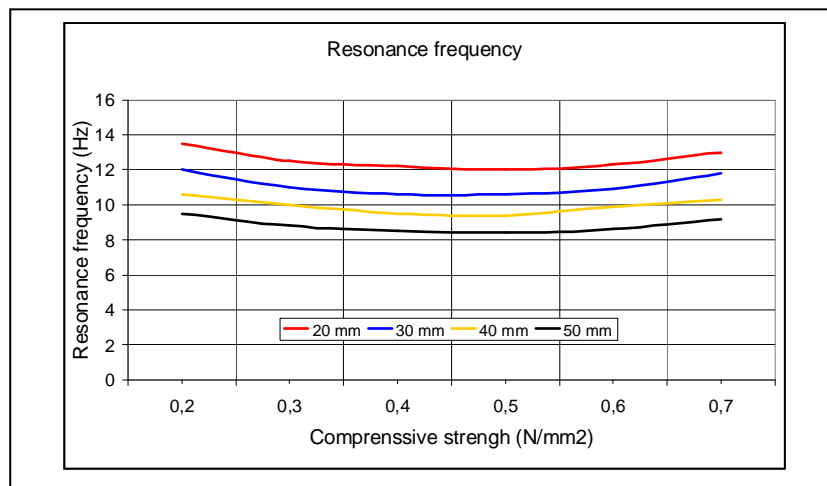
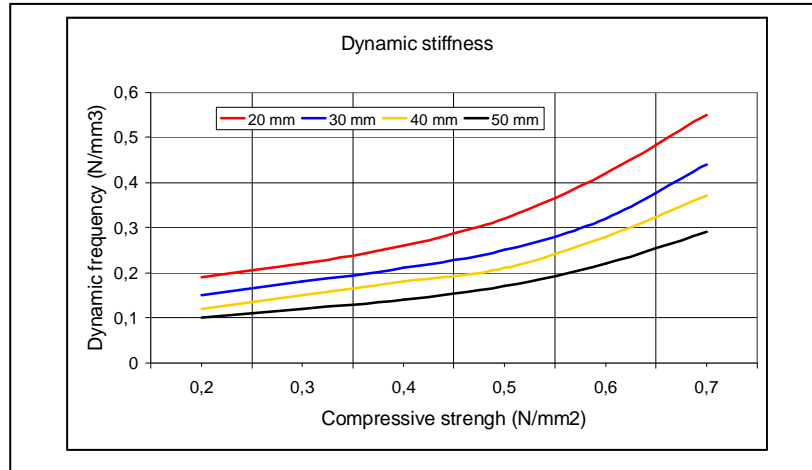
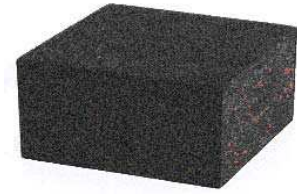


Nature: Recycled rubber and PUR.  
 Density:  $600 \text{ kg/m}^3 \pm 10 \%$   
 Static load range:  $0,15 - 0,40 \text{ N/mm}^2$   
 Maximum total load:  $0,80 \text{ N/mm}^2$   
 Max. Ocasional load:  $4 \text{ N/mm}^2$   
 Pad dimensions (mm): From  $60 \times 60$  till sheets of  $1200 \times 1000 \times 20 - 30 - 40 - 50$



Information in this document and otherwise supplied to users, is based on our general experiences and is given in good faith but, because of particular factors which are outside our knowledge and control and affect the use of products, no warranty is given or implied with respect to such information. Specifications are subject to change without notice.



**CROXON XILON 40**

**Fecha:**

**27 - 04 - 2009**