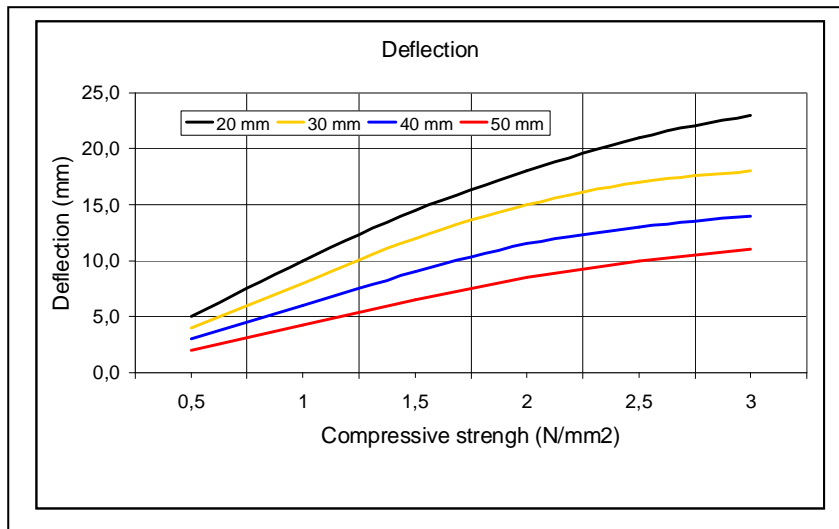
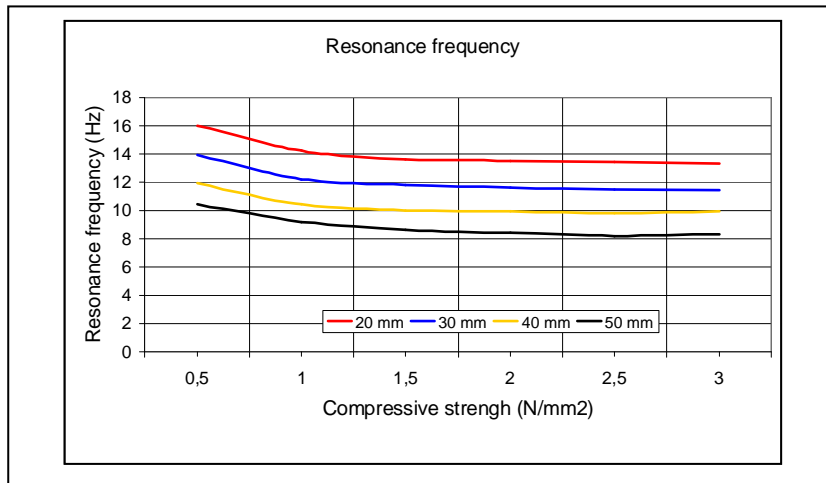
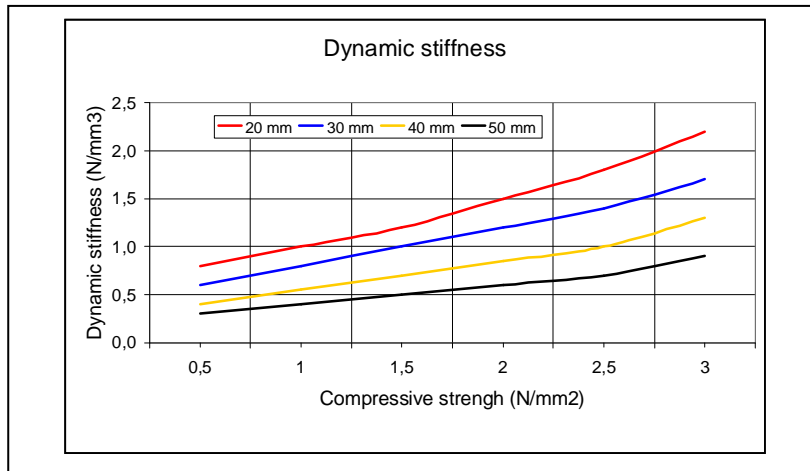


Nature: Recycled rubber and PUR.  
 Density: 1050 kg/m<sup>3</sup> ±10 %  
 Static load range: 0,80 – 2,00 N/mm<sup>2</sup>  
 Maximum total load: 3,00 N/mm<sup>2</sup>  
 Max. occasional load: 20 N/mm<sup>2</sup>  
 Pad dimensions (mm): From 60 x 60 till sheets of  
 1200 x 1000 x 20 – 30 – 40 – 50



Information in this document and otherwise supplied to users, is based on our general experiences and is given in good faith but, because of particular factors which are outside our knowledge and control and affect the use of products, no warranty is given or implied with respect to such information. Specifications are subject to change without notice.



**CROXON XILON 70**

Fecha: 27 – 04 - 2009