

## Concept panels



### FEATURES

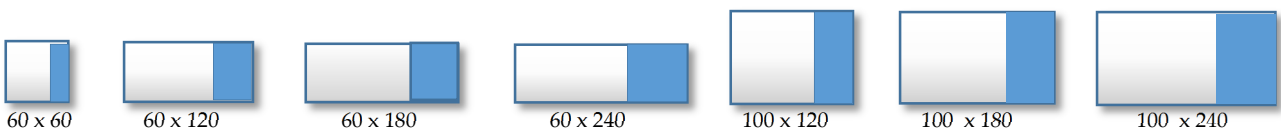
DUALO CONCEPT are absorbent and decorative panels in two colors, arranged horizontally or vertically. These two colors are combined in a ratio of 1:2. Tissues that coated, front and sides are pure wool, and connected seamlessly between them, using a padded stitching.

DUALO CONCEPT is presented in the same formats as the Evolo and Band panels to be combined together. The range of colors combine well with each other.

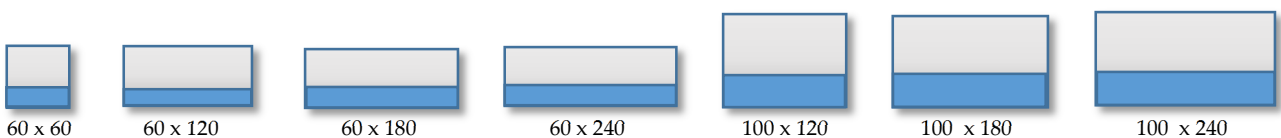
### FORMATS

DUALO CONCEPT acoustic panels are available in 7 standard formats based on the unit of 60 inches and 45 millimeters thick:

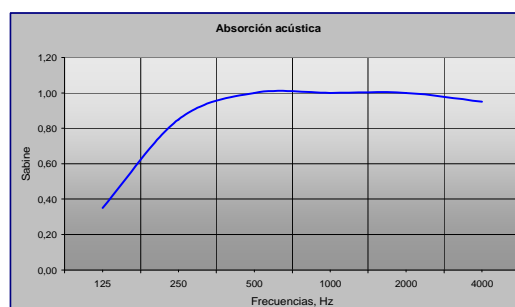
#### DUALO UNO



#### DUALO DOS



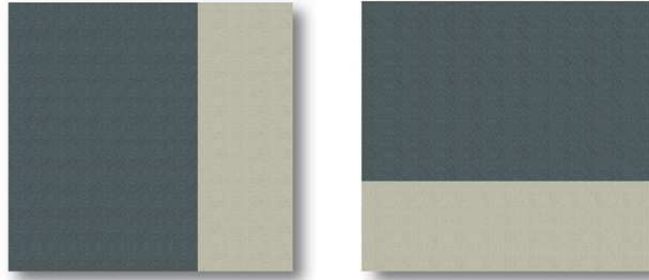
### ACOUSTIC PROPERTIES



NCR ( $\alpha_w = 0,85$ ) Class C – ASTM C423

## FABRIC COLOURS

The combinations of color in the product family DUALO CONCEPT can be freely chosen from a palette of 59 different shades BLAZER using specially selected fabrics for coating panels. All shades blend together.



## PROPERTIES OF WOOL

- Wool is a renewable resource.
- It is very comfortable due to its ability to absorb and release moisture.
- It is a flame retardant and biodegradable.
- It is naturally resistant to dirt.
- Excellent sound absorbent.

## REACTION TO FIRE

B s1 d0 (Euroclasses).

## RECYCLING

100% recyclable and biodegradable.

## INSTALLATION

All panels DUALO CONCEPT are ready to be installed on the walls.

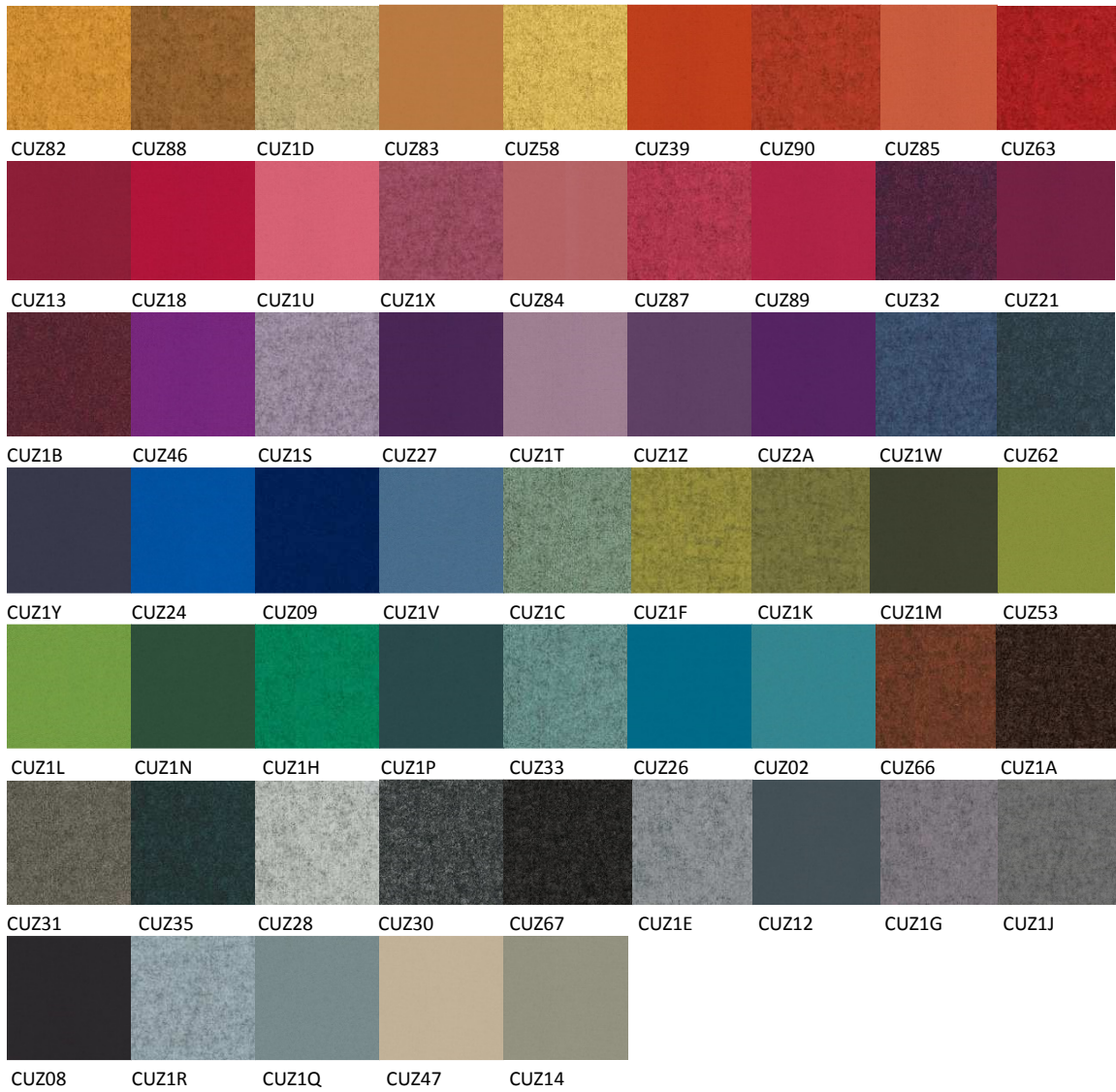
## APPLICATION

Due to their design, quality fabrics, color and contrast and quality of manufacture allow use in offices, meeting rooms, public, commercial, etc. spaces.



## FABRICS

The surface of the panels are covered with fabric Blazier, 100% pure virgin wool.



### **QUALITY and FINISH**

DUALO CONCEPT panels are fully handmade and with high quality materials. Any surface thereof testify quality.



DUALO CONCEPT panels acoustic comfort combine with a timeless aesthetic. Forms defined and selected colors are blended in a harmonious piece. The components of these panels are the same for all models. The frame protects and reinforces high efficiency, impact resistance at the core of the panel's acoustic materials. The hanger system by metal elements in the back of the panels provides a simple and easy to install system.

