

DESCRIPTION

The **CROXON MAGIC** pads, based on selected recycled rubber, are designed to absorb and reduce noise impact on the formation of floating floors. Its design, ergonomics, dynamic stiffness and the configuration of the surface in contact with the slab or floor, made from the same, a highly effective and essential element for acoustic floors.

CROXON MAGIC is a market leader in the design and the most adaptable and effective product for reducing vibrations and noise impact.

It is able to protect entire buildings from transmissions of heavy and light rails and the pads can be used for air conditioning installations in buildings and in floating floors.

The isolators **CROXON MAGIC**, due to its lower settings are superior to all media developed to date supports.

The **CROXON MAGIC** pads allow a wide range of loads constantly maintaining its natural frequency, controlled by the thickness rather than the static deflection, and supports linear springs.

SPECIFICATIONS

Nature	Recycled rubber bonded with PUR.
Color.	Anthracite
Underside appearance	Wavy.
Top Surface:	Plain.
Density	650 kg/m ³ ± 5%
Total static charge	From 0.02 to 0.15 N/cm ² .
Maximum total load	0.25 N/cm ² .
Occasional load	1.5 N/mm ²

Presentation					
Products	Measure (mm)	Loads (kg/cm ²)	Occasional peak load (kg/ud)	Deflection (mm)	Resonance frequency (Hz)
Croxon Magic 20	20 x 100 x 100	0,78 – 1,96	250	2,5 – 6,0	13,8 – 11,1
Croxon Magic 30	30 x 100 x 100		300	3,5 – 7,1	11,7 – 9,8
Croxon Magic 40	40 x 100 x 100		400	4,0 – 8,0	10,0 – 8,2
Croxon Magic 50	50 x 100 x 100		500	5,1 – 8,6	8,3 – 6,8

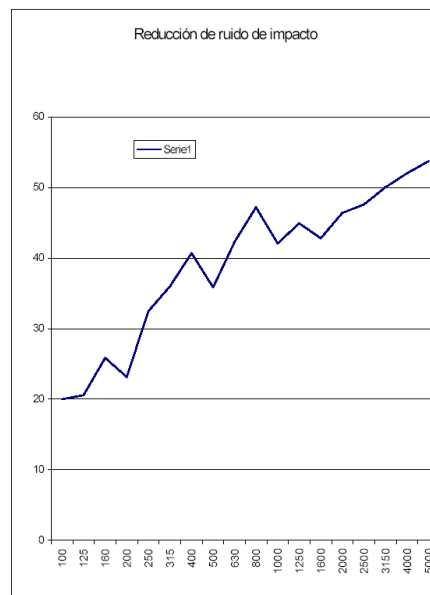
APPLICATIONS

- Acoustic floating floors for cinemas, recording studios, equipment rooms, supermarkets, offices, plant rooms, etc.
- Metal structures to insulate walls and thick walls.
- Isolation of buildings within walking distance of railways and other vibrations and noise.
- Machinery foundation blocks.
- Isolation secondary air handling units.
- Isolation of sensitive equipment.

Test ant - impact of a CRROXON MAGIC 50 pad under a concrete slab 4 inches thick without mineral wool, made by AAC, Vitoria, according to UNE EN ISO 140-8:1998.

Frec. Hz	L_{n0}	ΔL
100	44,4	19,9
125	42,4	20,5
160	42,0	25,8
200	42,3	23,1
250	34,9	32,4
315	30,3	36,0
400	26,9	40,7
500	32,2	35,9
630	25,9	42,3
800	21,6	47,2
1000	28,0	42,0
1250	26,0	44,9
1600	28,5	42,8
2000	25,8	46,4
2500	24,9	47,6
3150	21,8	50,0
4000	18,4	52,0
5000	14,8	53,7

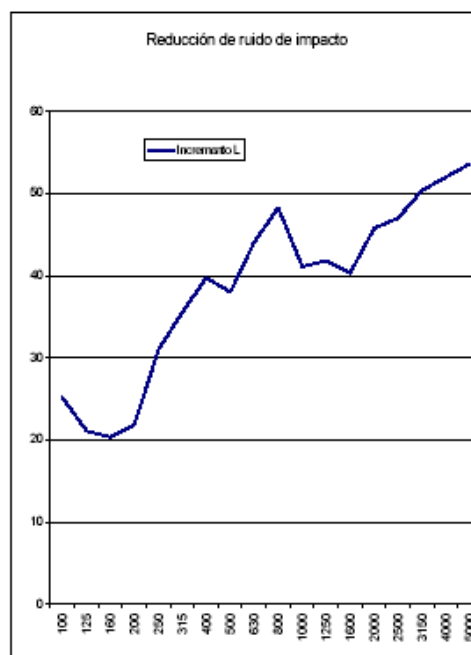
ΔL_{nw}	ΔL_{nR}	C_{tr}
42,0	42,6	-10,0



Test ant - impact of a CRROXON MAGIC 40 pad under a concrete slab 4 inches thick without mineral wool, made by AAC, Vitoria, according to UNE EN ISO 140-8:1998.

Frec. Hz	L_{n0}	ΔL
100	39,2	25,2
125	41,9	21,1
160	47,5	20,3
200	43,6	21,8
250	36,4	31,0
315	30,7	35,5
400	27,8	39,8
500	30,0	38,0
630	24,1	44,1
800	20,5	48,3
1000	28,9	41,1
1250	29,2	41,8
1600	30,9	40,3
2000	26,4	45,8
2500	25,5	47,0
3150	21,4	50,4
4000	18,4	52,0
5000	14,9	53,6

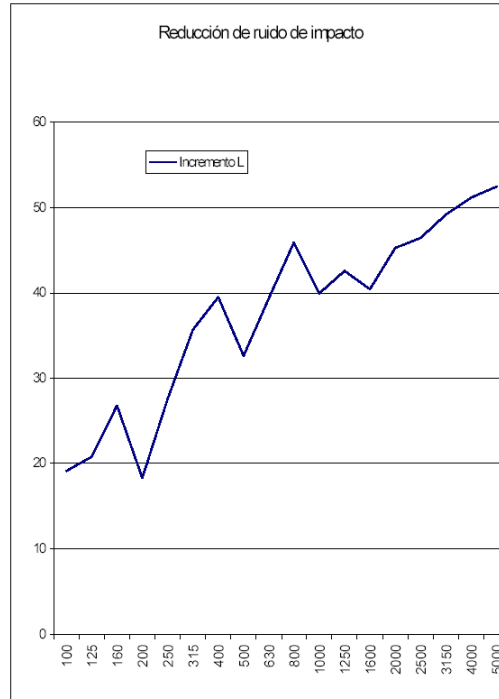
ΔL_{nw}	ΔL_{nR}	C_{tr}
41,0	41,1	-11,0



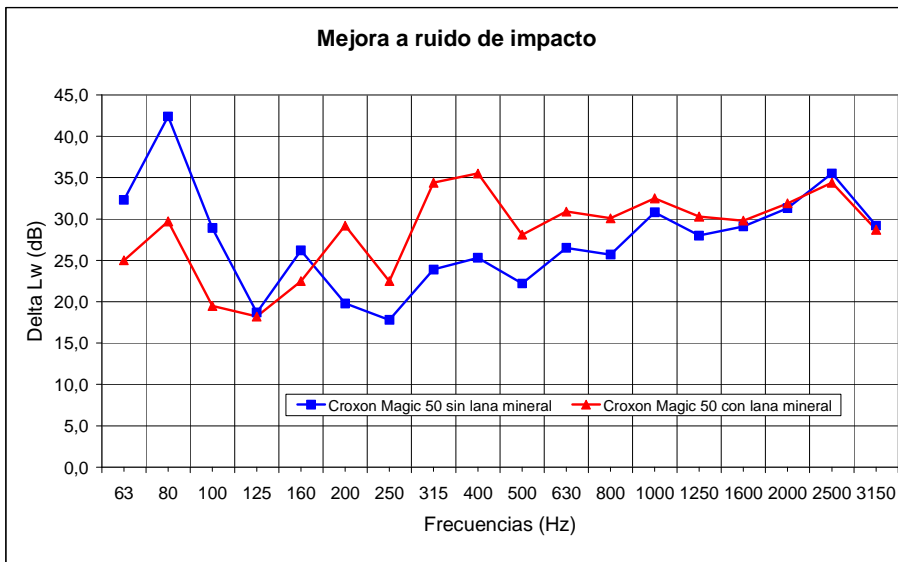
Test ant - impact of a CRROXON MAGIC 30 pad under a concrete slab 4 inches thick without mineral wool, made by AAC, Vitoria, according to UNE EN ISO 140-8:1998.

Frec. Hz	L_{n0}	ΔL
100	45,2	19,1
125	42,2	20,8
160	41,0	26,8
200	47,1	18,3
250	39,8	27,6
315	30,5	35,7
400	28,1	39,5
500	35,4	32,6
630	28,8	39,4
800	22,8	45,9
1000	30,1	39,9
1250	28,4	42,6
1600	30,8	40,4
2000	26,9	45,3
2500	26,0	46,4
3150	22,7	49,1
4000	19,3	51,2
5000	16,1	52,5

ΔL_{nw}	ΔL_{nA}	C_{IA}
40,0	40,1	-10,0

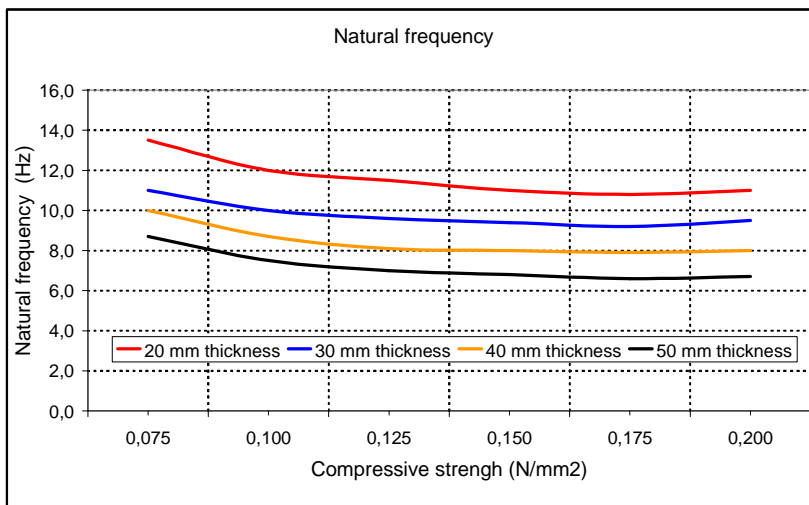
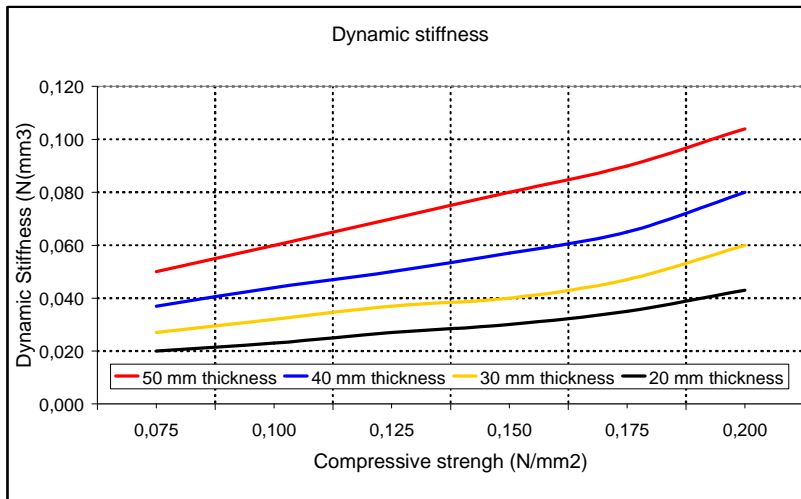
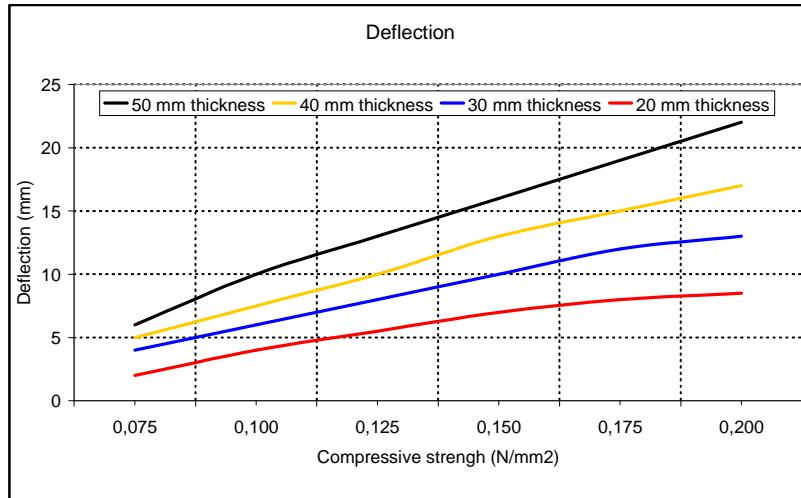


Test ant-impactof a CRROXON MAGIC 20 pad under a concrete slab 4 inches thick without mineral wool, made by AAC, Vitoria, according to UNE EN ISO 140-8:1998.



Frecuencia Hz	ΔLw (dB)	
	Sin fibra	Con fibra
50	27,5	20,1
63	32,3	25,0
80	42,4	29,7
100	28,9	19,5
125	18,7	18,2
160	26,2	22,5
200	19,8	29,2
250	17,8	22,5
315	23,9	34,4
400	25,3	35,5
500	22,2	28,1
630	26,5	30,9
800	25,7	30,1
1000	30,8	32,5
1250	28,0	30,3
1600	29,1	29,8
2000	31,3	31,9
2500	35,5	34,4
3150	29,2	28,7

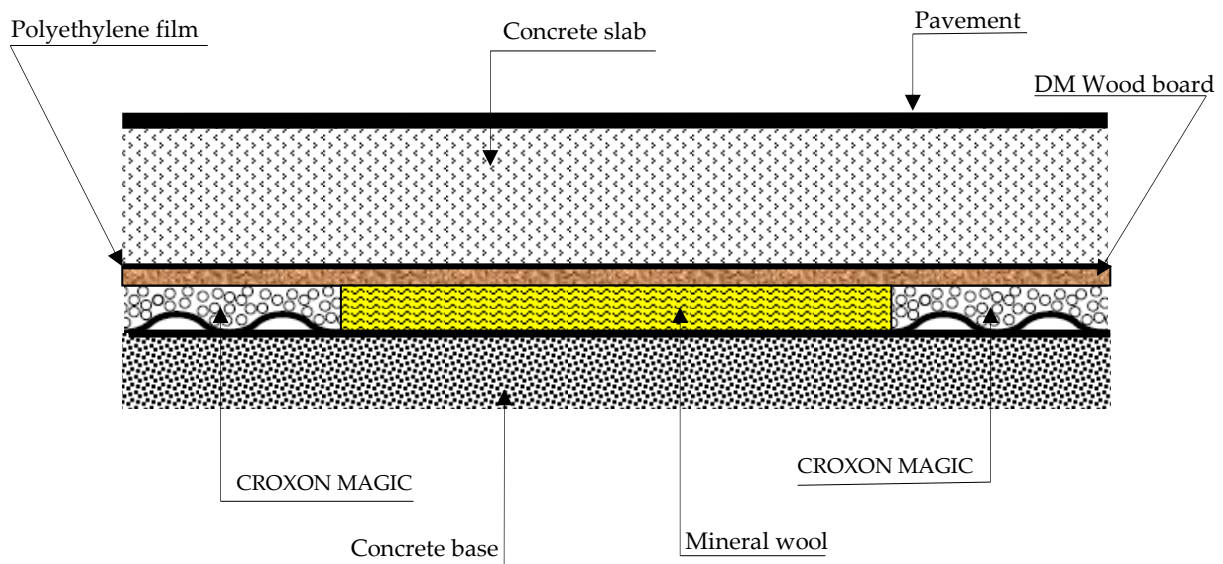
Impact noise test with elastic supports Croxon Magic (50 x 100 x 100 mm) and a reinforced concrete floor (8 cm thick) with and without mineral wool. Measured and valued according Decreto326/2003 25 November the Government of Andalusia, using standardized machine impacts.



PROPERTIES

CROXON MAGIC is unique as ant vibration support and anti-impact those applied loads that are substantially under compressive stress, increasing the overload factor up to 300% or more. The result is a permanent resilience under constant natural frequency.

- Easy to install.
- Excellent deflection.
- Structural contact negligible.
- Low natural frequency.
- Recycled and recyclable product.
- Economic and durable.
- Wide range of products.



CROXON MAGIC installation detail



This products considers all aspect of reducing environmental impact through Eco-Design, using the methologic based on EDECON Project funded by the European Commission.

Information in this document and otherwise supplied to users is based on our general experiences and is given in good faith but, because of particular factors which are outside our knowledge and control and affect the use of products, no warranty is given or implied with respect to such information. Specifications are subject to change without notice.

CROXON, S. L.

Polig. Ind. Majaravique, 27 B
 41309 La Rinconada (Sevilla)
 Telf.: +34 954 904 225
 Fax: +34 954 906 676
 E-mail: croxon@croxon.es
 Web: www.croxon.es