



## CHARACTERISTICS

**CLEMPOL 111** is a longitudinal vibration support, based on recycled rubber and elastomers, designed to prevent or reduce transmission of vibrations by interposing between the source of vibration and the support structures of these elements in addition to the separators elastic properties together an excellent damping capacity. It is used for the formation of floating floors.

## SPECIFICATIONS

Nature	Recycled rubber and binders.
Density	650 kg/m <sup>3</sup>
Thermal resistance	- 80 °C to + 210 °C
Thermal conductivity $\lambda$	0,113 w/m <sup>o</sup> C
Oils and grease resistance	Very good
Acids resistance	Good.
Superficial tolerance	± 2 mm
Weight tolerance	± 4 %
Electric isolation	Non conductive material.
Appearance:	

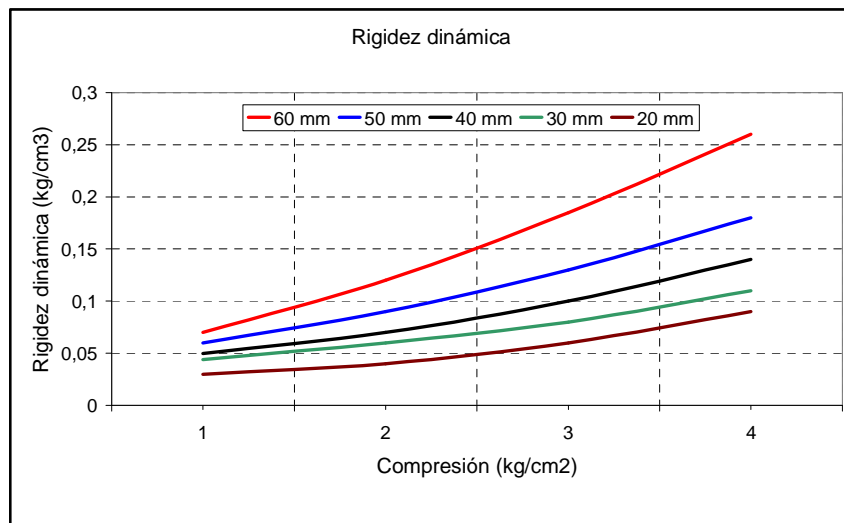
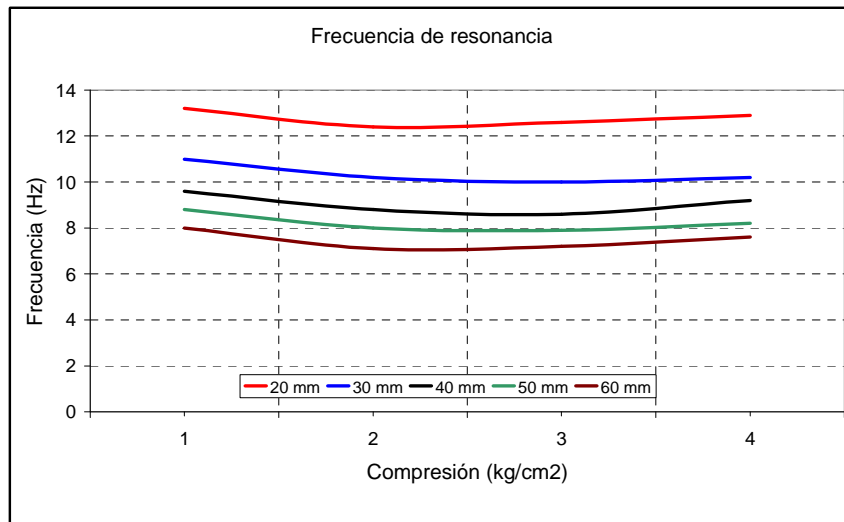
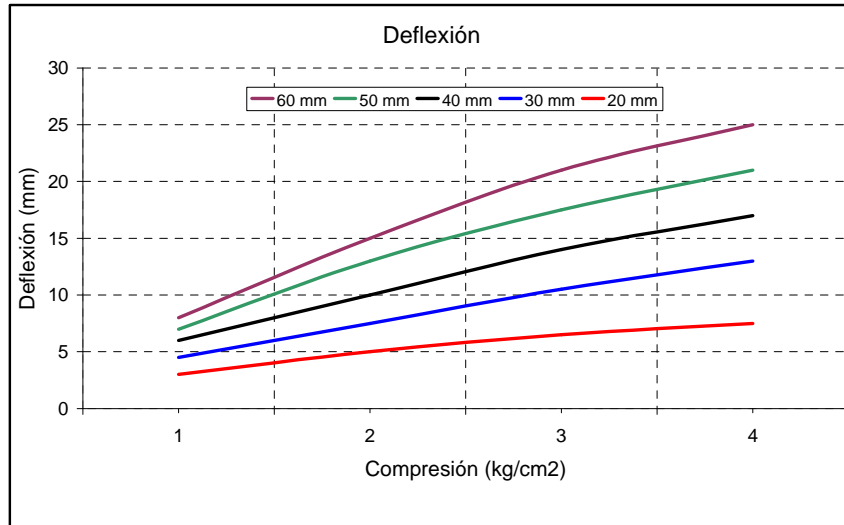
Products	Measures (mm)	Products	Measures (mm)	Products	Measures (mm)
<b>Clempol 111/100</b>	60 x 100 x 1200	<b>Clempol 111/80</b>	60 x 80 x 1200	<b>Clempol 111/60</b>	60 x 60 x 1200
	50 x 100 x 1200		50 x 80 x 1200		50 x 60 x 1200
	40 x 100 x 1200		40 x 80 x 1200		40 x 60 x 1200
	30 x 100 x 1200		30 x 80 x 1200		30 x 60 x 1200
	20 x 100 x 1200		20 x 80 x 1200		20 x 60 x 1200

Note: Other sizes on requests.

## PROPIEDADES

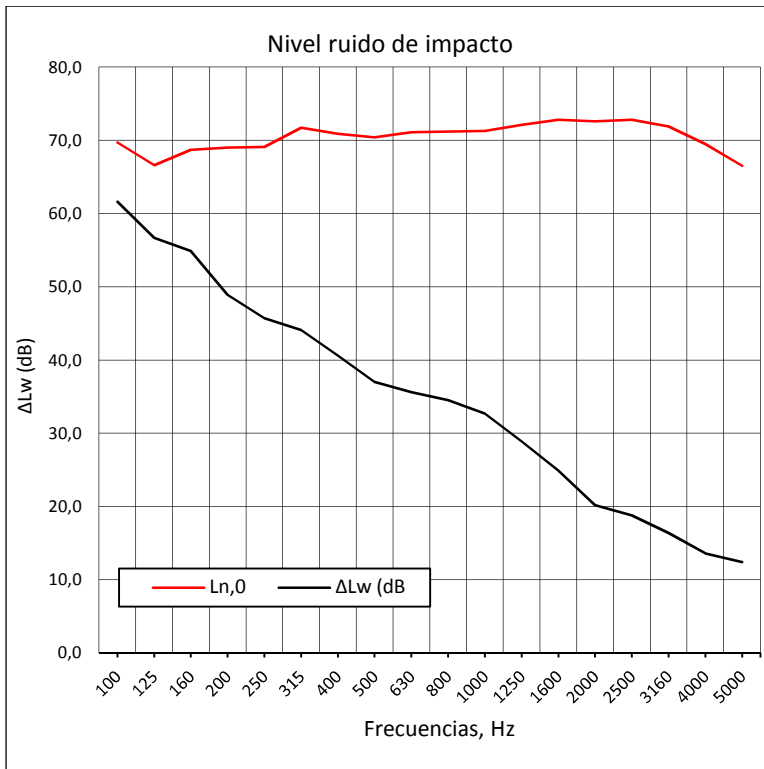
**CLEMPOL 111** tiene las siguientes ventajas:

- Es un excelente amortiguante acústico.
- Alta resistencia a la compresión manteniendo la flexibilidad.
- Adecuado para desolarizar soleras de compresión.
- Reduce el costo de la formación de suelos flotantes con alta eficacia.
- Fácil de instalar.



## APPLICATIONS

CLEMPOL 111 is used for the formation of floating floors.

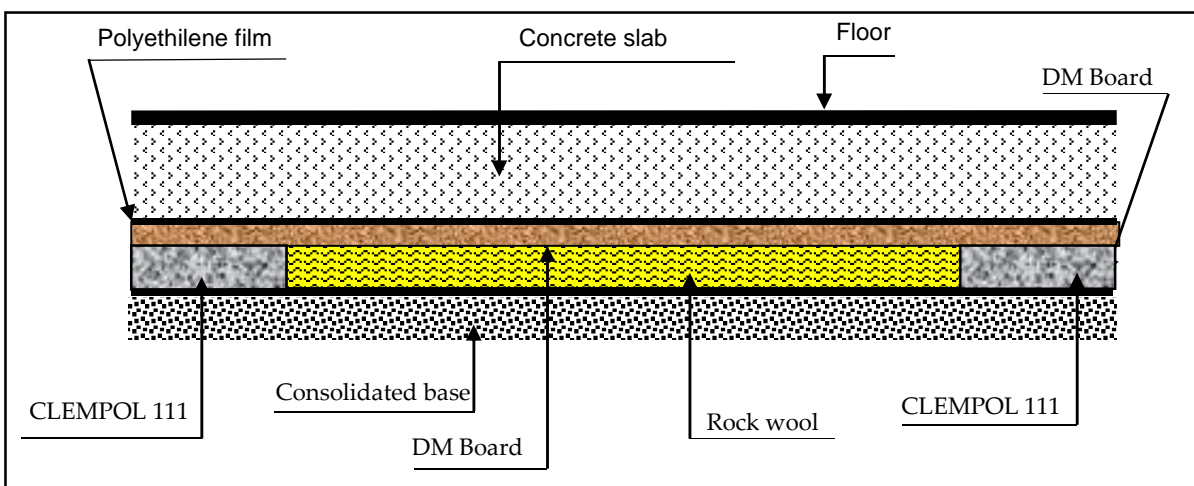


F (Hz)	$L_{n,0}$	$\Delta L$ (dB)
100	69,7	61,6
125	66,7	56,7
160	68,7	54,9
200	69,0	48,9
250	69,1	45,7
315	71,1	44,1
400	70,9	40,6
500	70,4	37,0
630	71,1	35,6
800	71,2	34,5
1000	71,3	32,7
1250	72,1	28,9
1600	72,8	24,9
2000	72,6	20,2
2500	71,8	18,8
3150	71,9	16,4
4000	69,5	13,6
5000	66,6	12,4

Test based floating floor Clempol 111 80/50 on a forged 160 mm Thickness and mineral wool between streets, a DM 16 board and concrete slab 80 mm thickness. Test according with UNE-EN ISO 140-8: 1998.  $\Delta L_w = 51.3$  (dB).

## HOW TO USE

**CLEMPOL 111** is placed directly on the ground to support it. Bands will be distributed according to the load to bear. Among **CLEMPOL 111** band and band is recommended to a medium density mineral wool. Place a wooden board over and above this film of polyethylene. Next, form the concrete base. It is advisable to install the baseboards with bands of **CLEMPOL 109**.



Clempol 111 installation details

Information in this document and otherwise supplied to users is based on our general experiences and is given in good faith but, because of particular factors which are outside our knowledge and control and affect the use of products, no warranty is given or implied with respect to such information. Specifications are subject to change without notice.

## CROXON, S. L.

Polig. Ind. Majaravique, 27 B  
41309 La Rinconada (Sevilla)  
Telf.: +34 954 904 225  
Fax: +34 954 906 676  
E-mail: [croxon@croxon.es](mailto:croxon@croxon.es)  
Web: [www.croxon.es](http://www.croxon.es)