



## CHARACTERISTICS

CLEMPOL 109 is an anti-vibration and anti-damping material made of recycled rubber particles of different particle sizes. The special physical structure of this composite gives it exceptional properties to solve many problems of vibrations.

CLEMPOL 109 has the advantage of introducing the damping on the elastic supports structural systems due to the different densities of rubber components, and consequently the ideal material to be used in the desolidarisation of wall, structural floor elements, stairs, etc. from the supporting structure.

## PRODUCTS AND SYSTEMS

Depending on the loads (static as well as dynamic loads), a Choice has to be made between the following materials of **CLEMPOL 109**, all used in the shape of a strip with a thickness of 5, 10, 15 or 20 mm and with varying width:

- 1.- **CLEMPOL 109/1**, to be placed under Light walls realizing a pressure up to 4 kg/cm<sup>2</sup>.
- 2.- **CLEMPOL 109/2**, under not bearing walls loads up to 8 kg/cm<sup>2</sup>.
- 3.- **CLEMPOL 109/3**, under heavy bearing walls, structural floor elements, etc. with loads up to 30 kg/cm
- 4.- **CLEMPOL 109/R**, under dry wall up to 2 kg/cm<sup>2</sup>.

## PERFORMANCES

The isolation performances with **CLEMPOL 109** depend on the thickness of the strip. This thickness is limited (20 mm. max) by the allowed movement of the suspended mass under dynamic action. Anyway, we recommend fixing freestanding isolated wall to the ceiling.

Generally, the following amelioration can be obtained in comparison with the non – isolated situation and isolated with **CLEMPOL 109** strip:

Strip	Load in kg/cm <sup>2</sup>	Deflection %	Dynamic stiffness MN/m <sup>3</sup>	Δ (dB) 5 mm	Δ (dB) 10 mm	Δ (dB) 15 mm	Δ (dB) 20 mm
<b>Clempol 109/1</b>	0 á 4	0 á 40	54	15	20	25	30
<b>Clempol 109/2</b>	4 á 8	10 á 30	38	15	20	25	30
<b>Clempol 109/3</b>	8 á 20	16 á 35	27	15	20	25	30
<b>Clempol 109/R</b>	0 á 2	0 á 30	18	15	20		

It may be important to mention that the creep rate of these **CLEMPOL 109** products remains quite low: < 2 %/ decade, so there is practically no modification of the material characteristics in time to be expected.

## APPLICATIONS

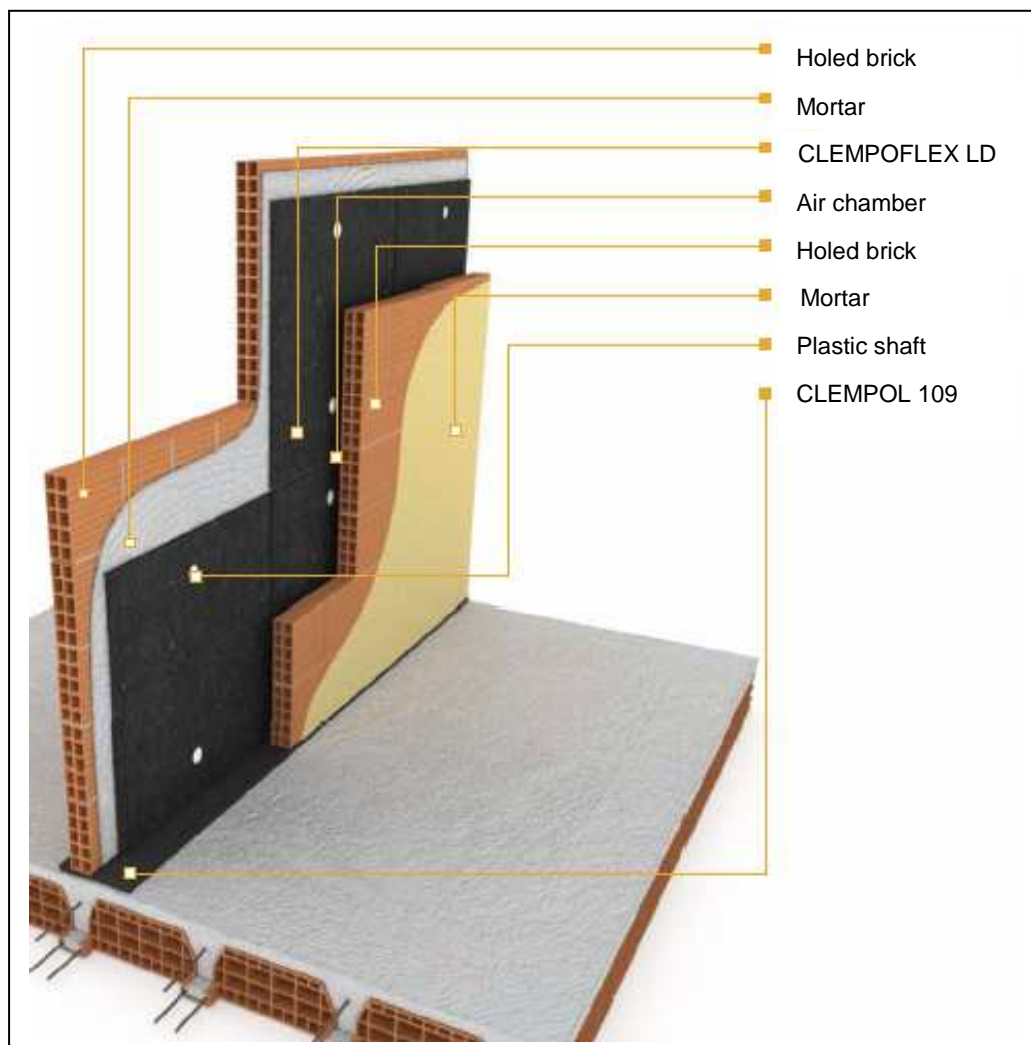
**CLEMPOL 109** is used to isolate floors and walls from the basic structures.

Vertically working, is the ideal material for fixing walls, as much simple as double, in floor systems. While in horizontal position, it is ideal as spring and spacing in disconnected structures, as it is the case in post and beam encountering against walls and floors.

The superficial roughness allows a perfect placing trough hydraulic mortar.

## HOW TO USE

It is essential that all structural elements to be isolate are clearly separated from each other by the **CLEMPOL 109** material and that no stiff contact is left between them.



This products considers all aspect of reducing environmental impact through Eco-Design, using the methologic based on EDECON Proyect funded by the European Commission.

Information in this document and otherwise supplied to users is based on our general experiences and is given in good faith but, because of particular factors which are outside our knowledge and control and affect the use of products, no warranty is given or implied with respect to such information. Specifications are subject to change without notice.

### **CROXON, S. L.**

Polig. Ind. Majaravique, 27 B  
41309 La Rinconada (Sevilla)

Tel.: +34 954 904 225

Fax: +34 954 906 676

E-mail: [info@croxon.es](mailto:info@croxon.es)

Web: [www.croxon.es](http://www.croxon.es)