

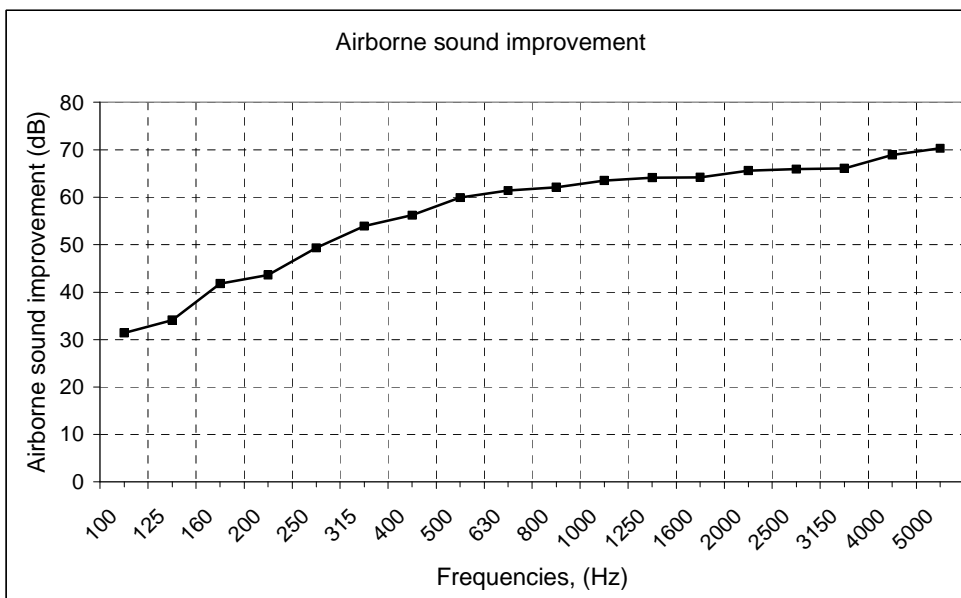


CHARACTERISTICS

CROSONE XP is a thixotropic elastomeric complex, specially formulated for the treatment of low frequency sound insulation, with acoustic properties and adhering very high, providing exceptional qualities important for the formulation of thick membranes “in situ” between plasterboard plates, the sealing of the insulating walls and other elements

SPECIFICATIONS

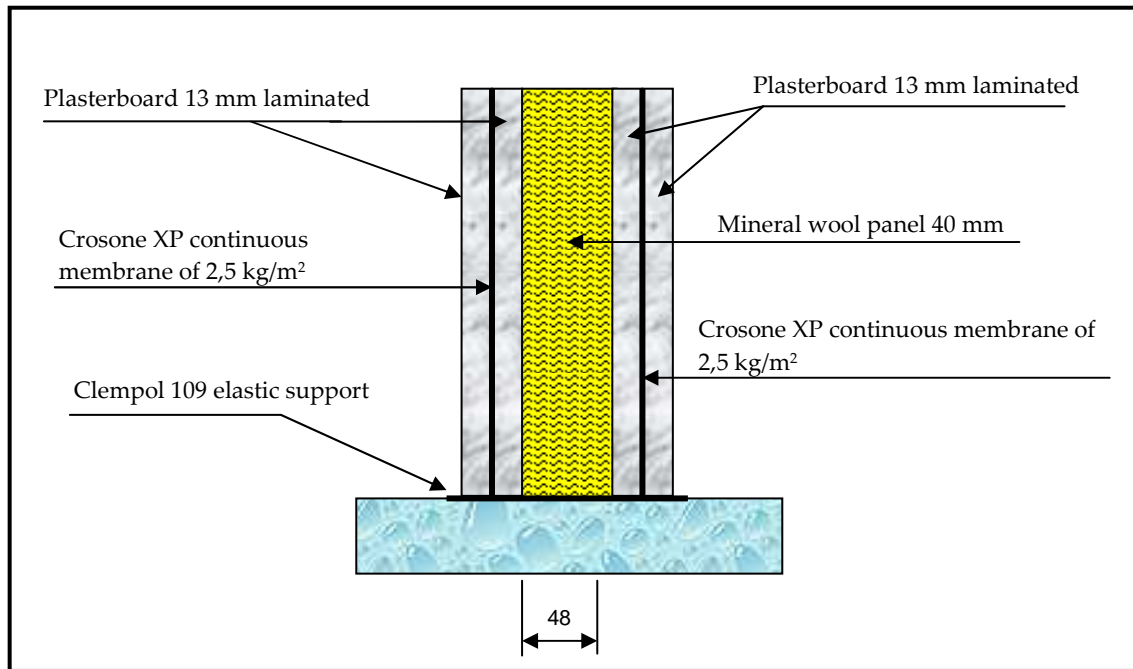
Material	Monocomponent elastomer.	
Colour	Gray.	
Density	1,100 kg/l.	
Drying time	15 minutes to the touch. 60 minutes to complete drying to 20 °C.	
Elongation at break	200 %.	UNE 53.165
Tensile	1,12 Mpa	UNE 53,165
Solvents	Free.	
Asphalts	Free.	
Water vapour permeability	0,230	UNE 53.097.
Working temperature	From - 5 °C to 80 °C	
Reaction to fire	M 2.	
Performance	From 0,600 kg/m ² , depending on application.	
Presentation	20 kg plastic pail.	
Palet	36 Pails (720 kgs).	



F, (Hz)	Rw (dB)
100	9,3
125	9,1
160	12,5
200	11,6
250	13,0
315	14,2
400	15,7
500	18,7
630	19,1
800	21,1
1000	22,8
1250	23,7
1600	24,7
2000	26,1
2500	27,8
3150	28,6
4000	33,4
5000	70,3

Index isolation R_w: 61 dB

Test carried out “in situ” in a cladding according to attached drawing



PROPERTIES

CROSONE XP has the following advantages:

- Good anti dumping at low, mid and high frequencies.
- It allows the formation of thick membrane in situ.
- Great grip strength.
- Easy to apply.
- Resistant to cold and ageing.
- Breathable and water vapour.
- Does not produce odours.
- Contains no solvents or asphalt.

APPLICATIONS

CROSONE XP is used for continuous membrane formation "in situ" between plasterboard panels, sealing walls, dumping of metallic elements, as an adhesive for fixing insulation materials like mineral wool absorbent, plasterboards, so most of the materials used in construction.

HOW TO USE

The surface must be dry and clean of any grease, dust or materials attached in order to obtain a good preparation and adherence. The application is made by airless spraying machine type Speedflo. With each pass is obtained a membrane of 1 kg /m² and 1 mm thick approximately.

PRECAUTIONS

The tools are cleaned with water immediately after use. **CROSONE XP** manipulation does not require special security measures. When applied with spraying machine is advisable to use safety goggles and masks. Do not apply at temperatures below 5 °C

Information in this document and otherwise supplied to users is based on our general experiences and is given in good faith but, because of particular factors which are outside our knowledge and control and affect the use of products, no warranty is given or implied with respect to such information. Specifications are subject to change without notice.

CROXON, S. L.

Polig. Ind. Majaravique, 27 B
41309 La Rinconada (Sevilla)
Telf.: +34 954 904 225
Fax: +34 954 906 676
E-mail: croxon@croxon.es
Web: www.croxon.es