



CHARACTERISTICS

CLEMPOL TN is a product based on a recycled rubber sheet, and pur foam complex for the absorption of the stationary frequencies. Its very technique design with a low natural frequency, besides of the rubber sheet for deadening the impact noise, makes it ideal for making floating floors subdued to severe transmission of vibrations and impact noise.

SPECIFICATIONS

Productos	CLEMPOL TN 92			CLEMPOL TN 93			CLEMPOL TN 94			CLEMPOL TN 95		
Composition	Rubber and foam			Rubber and foam			Rubber and foam			Rubber and foam		
Measures (cm)	A	B	C	A	B	C	A	B	C	A	B	C
	120	100	2	120	100	3	120	100	4	120	100	5
Kg/unit	9,49			12,14			15,01			17,27		
Reaction to fire	B2			B2			B2			B2		

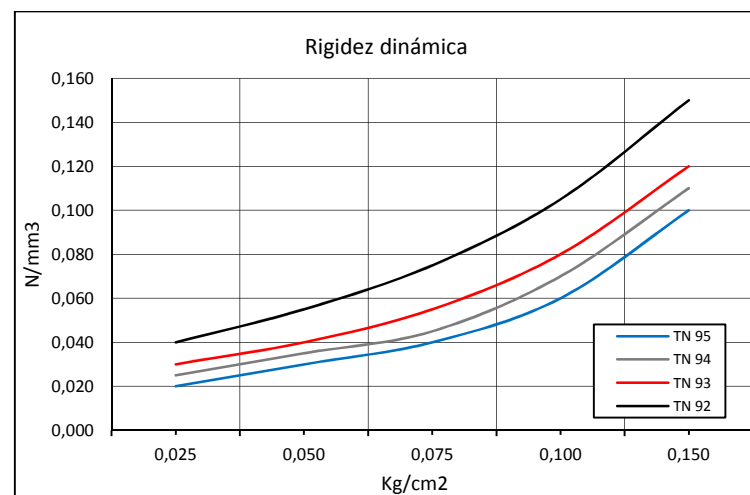
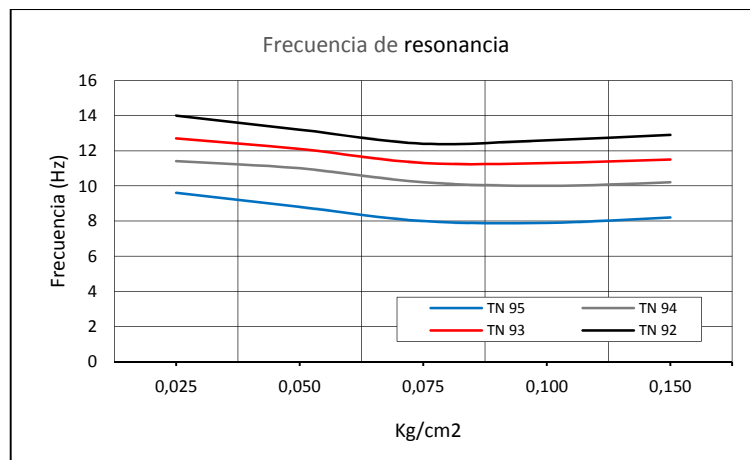
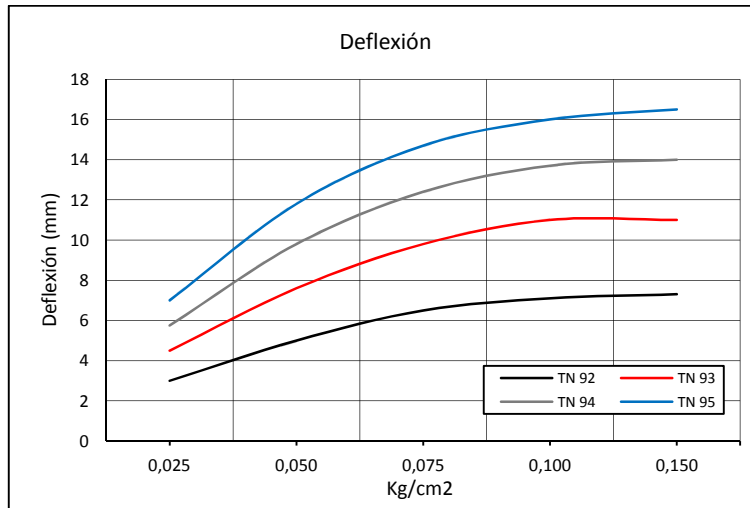
PROPERTIES

CLEMPOL TN has the next properties:

- Excellent acoustic deadening.
- Ideal antivibratory.
- Reduction of vibrations transmission.
- Easy to install.
- Reduction of the costs in floating floor installation.
- It fits perfectly with concrete slab forming a body.
- Important antidamping effect with concrete slab.

APPLICATIONS

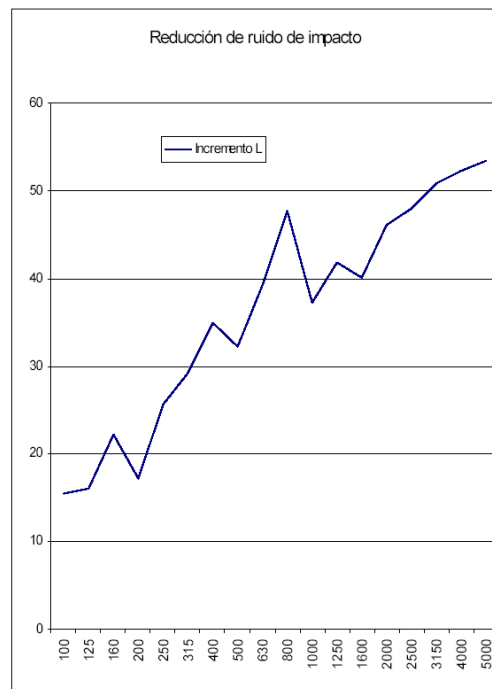
CLEMPOL TN is employed to make floating floors in theatres, recording studios, discotheques, pubs, gymnasiums, cinemas, machinery rooms, industries, etc. to disconnect concrete floors and as deadening element in those applications where be necessary a discontinuity of the buildings elements.



Improved impact noise under a concrete slab 4 cms thickness. Tests by AAC, Vitoria.

Frec. Hz	L_{n0}	ΔL
100	48,8	15,5
125	46,9	16,1
160	45,6	22,2
200	48,3	17,2
250	41,7	25,7
315	37,0	29,3
400	32,6	35,0
500	35,8	32,2
630	28,9	39,2
800	21,1	47,6
1000	32,9	37,2
1250	29,1	41,8
1600	31,1	40,2
2000	26,0	46,1
2500	24,5	48,0
3150	21,0	50,8
4000	18,1	52,3
5000	15,0	53,5

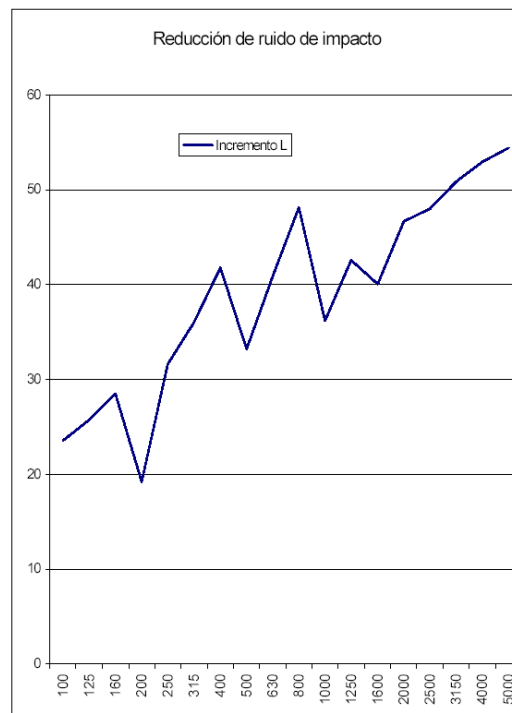
ΔL_{nw}	ΔL_{nA}	C_{in}
39,0	38,4	-12,0



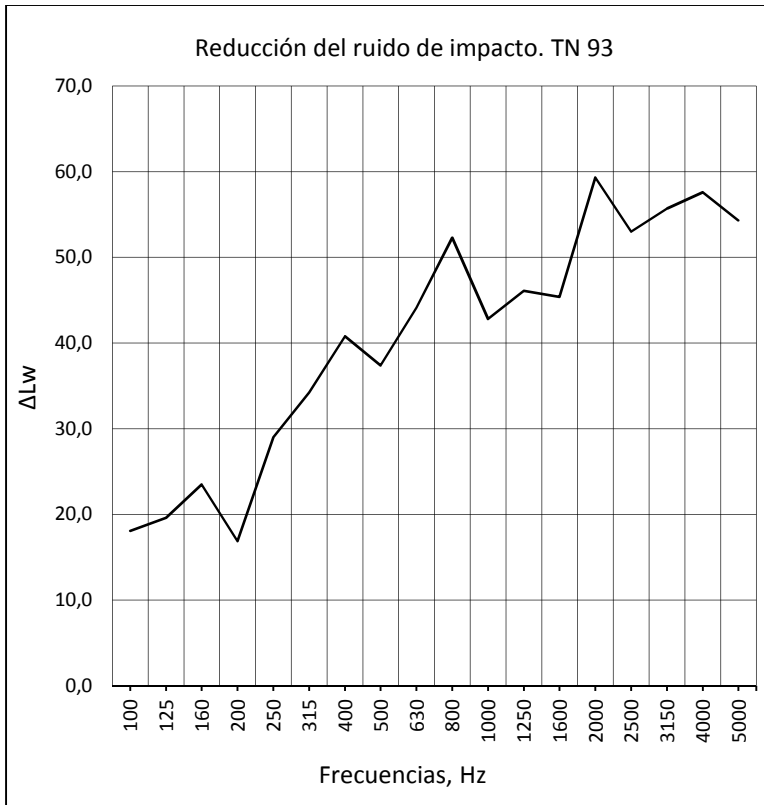
Clempol TN 92

Frec. Hz	L_{n0}	ΔL
100	64,3	23,6
125	63,0	25,7
160	67,8	28,5
200	65,5	19,2
250	67,4	31,6
315	66,2	36,0
400	67,6	41,8
500	68,1	33,2
630	68,2	40,9
800	68,8	48,1
1000	70,1	36,2
1250	70,9	42,6
1600	71,2	40,0
2000	72,2	46,7
2500	72,5	48,0
3150	71,8	50,8
4000	70,4	53,0
5000	68,5	54,4

ΔL_{nw}	ΔL_{nA}	C_{in}
42,0	40,6	-10,0

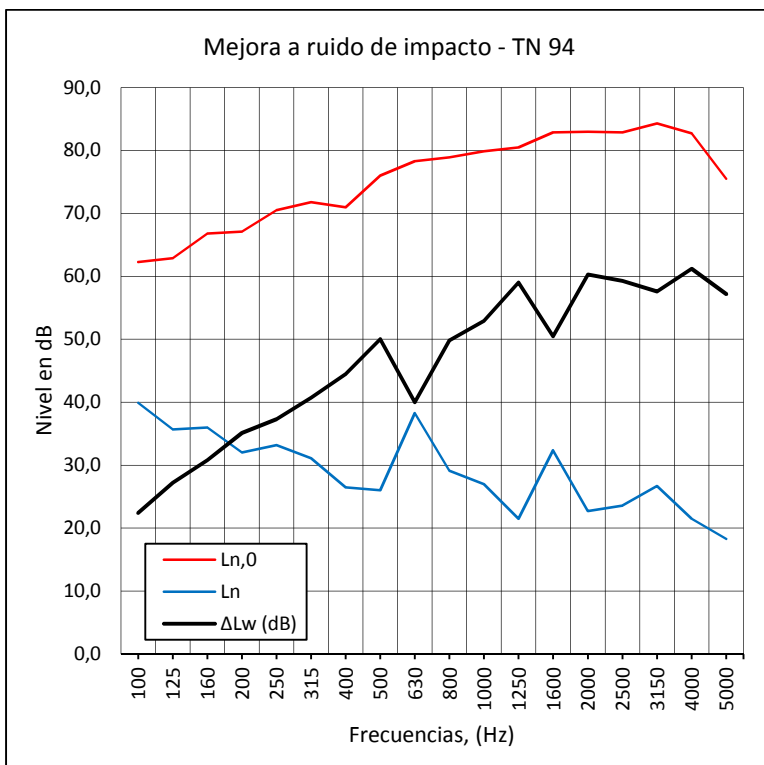


Clempol TN 95



F (Hz)	$L_{n,0}$	ΔL (dB)
100	59,4	18,1
125	58,2	19,6
160	60,1	23,5
200	66,3	16,9
250	68,9	29,0
315	70,1	34,2
400	69,2	40,8
500	73,7	37,4
630	74,7	44,1
800	74,7	52,3
1000	72,6	42,8
1250	72,4	46,1
1600	72,3	45,4
2000	72,0	59,3
2500	71,2	53,0
3150	71,8	55,7
4000	70,5	57,6
5000	68,9	54,3

Test performed on a floor slab 160 mm thick with CLEMPOL TN 93 and a concrete slab 5 cm thickness, according to UNE-EN ISO 140-8: 1998. $\Delta L_w = 41.8$ (dB).



F (Hz)	$L_{n,0}$	L_n	ΔL (dB)
100	62,3	39,9	22,4
125	62,9	35,7	27,2
160	66,8	36,0	30,8
200	67,1	32,0	35,1
250	70,5	33,2	37,3
315	71,8	31,1	40,7
400	71,0	26,5	44,5
500	76,0	26,0	50,0
630	78,3	38,3	40,0
800	78,9	29,1	49,8
1000	79,9	27,0	52,9
1250	80,5	21,5	59,0
1600	82,9	32,8	50,5
2000	83,0	27,7	60,3
2500	82,9	23,6	59,3
3150	84,3	26,7	57,6
4000	82,7	21,5	61,2
5000	75,5	18,3	57,2

Test performed by EKO acoustic engineering, Vitoria, in a machines room, with CLEMPOL TN 94 and a concrete slab 8 cms thick, according to UNE-EN ISO 140-8: 1998. $\Delta L_w = 46.5$ (dB).

HOW TO USE

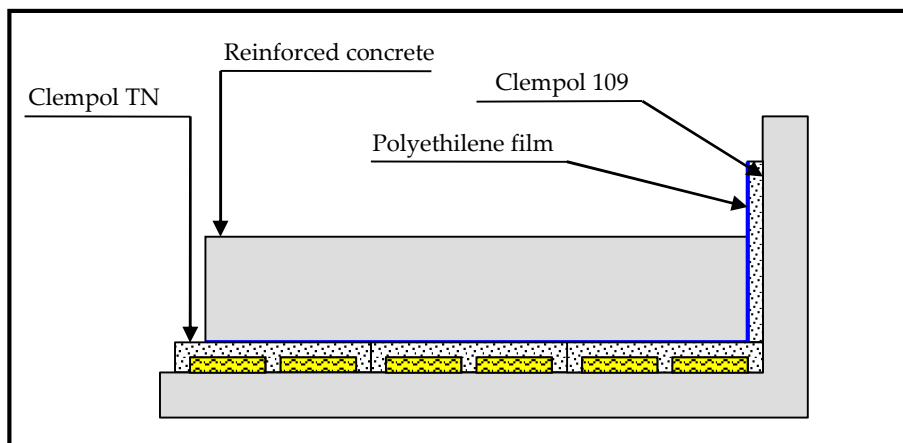
CLEMPOL TN is employed to make floating floors in theatres, recording studios, discotheques, pubs, gymnasiums, cinemas, machinery rooms, industries, etc. to disconnect concrete floors and as deadening element in those applications where be necessary a discontinuity of the buildings elements.

INSTRUCTIONS FOR USE

The surface will be clean and levelled without free materials or debris. Each sheet of **CLEMPOL TN** lays one next the other with the load ribs together. Textile surface will install against the concrete floor.

It is very important to install skirting board – **CLEMPOL 109** – along the perimeter of the floating floor. And now, it will be installed a polyethylene film to avoid the concrete goes through the panels joint of **CLEMPOL TN**.

It will make the reinforce concrete. The minimum thickness will be of 5 cm in function of the static loads.



CLEMPOL TN installation details



This products considers all aspect of reducing environmental impact through Eco-Design, using the methologic based on EDECON Project funded by the European Commission.

Information in this document and otherwise supplied to users is based on our general experiences and is given in good faith but, because of particular factors which are outside our knowledge and control and affect the use of products, no warranty is given or implied with respect to such information. Specifications are subject to change without notice.

CROXON, S. L.

Polig. Ind. Majaravique, 27 B
41309 La Rinconada (Sevilla)

Tel.: +34 954 904 225

Fax: +34 954 906 676

E-mail: croxon@croxon.es

Web: www.croxon.es